

Preliminary 2023 SDG Pace of Progress using the Updated 2030 Numerical Target and Data (as of 06 September 2024)

Stakeholders' Chamber
Ace Hotel & Suites, Pasig City
30 September 2024



Outline of the Presentation

1

BACKGROUND

2

PACE OF
PROGRESS

3

PRELIMINARY
RESULTS

4

OTHER
INITIATIVES AND
NEXT STEPS



The **Philippines**, together with other 192 member states of the United Nations, has committed towards a unique, ambitious goal of Leaving No One and Nowhere Behind by the end of 2030.

The **Philippines** is one of the top countries in the **Asia Pacific Region** with the **most data available for SDG indicators as of 05 September 2024** based on the Asia Pacific SDG Gateway of the United Nations Economic and Social Commission for Asia and the Pacific (**UNESCAP**).



ESCAP
Economic and Social Commission
for Asia and the Pacific



Updated National Indicator Framework

(approved through PSA Board Resolutions no. 2 and 10, series of 2023, and no. 08, Series of 2024)

GLOBAL SDG Indicators

10 March 2017:

adoption at the 48th session of the
UNSC the SDG indicator framework that
was developed by the IAEG-SDGs

17
GOALS

169
TARGETS

247*
INDICATORS

* Including repeating indicators

Philippine SDG Indicators

17
GOALS

98
TARGETS

158
INDICATORS

Among the 158 identified Philippine
SDG Indicators,

98
GLOBAL
INDICATORS

34
PROXY
INDICATORS

26
SUPPLEMENTAL
INDICATORS

2023 SDG Watch

Posted 2023 SDG
Watch updates last
15 January 2024

REPUBLIC OF THE PHILIPPINES PHILIPPINE STATISTICS AUTHORITY				
Based on submissions as of 08 November 2023				
				
1 NO POVERTY GOAL 1. ERADICATE EXTREME POVERTY AND HUNGER				
Goals/Targets/Indicators ¹	Baseline ²	Latest	Target ³	Data Source Agency
target 1.1 By 2030, eradicate extreme poverty for all people everywhere, currently measured as people living on less than \$1.25 a day				
1.1.1 Proportion of population below the international poverty line ⁴	6.1 2015	2.7 2018	5.4 2030	World Development Indicators Database, World Bank
Proportion of employed population aged 15 years old and over living below the international poverty line of US\$1.90 per day ⁵	5.9 *	2.2 2022	≅ 0 2030	ILOSTAT, ILO
Female employed population ⁶	4.9 *	2.0 *	≅ 0 2030	ILOSTAT, ILO
Male employed population ⁶	6.6 *	2.8 *	≅ 0 2030	ILOSTAT, ILO
Proportion of employed population aged 15 to 24 years old living below the international poverty line of US\$1.90 per day ⁵	7.4 *	3.0 *	≅ 0 2030	ILOSTAT, ILO
Female employed population ⁶	5.2 *	2.0 *	≅ 0 2030	ILOSTAT, ILO
Male employed population ⁶	8.7 *	3.6 *	≅ 0 2030	ILOSTAT, ILO
Proportion of employed population aged 25 years old and over living below the international poverty line of US\$1.90 per day ⁵	5.6 *	2.4 *	≅ 0 2030	ILOSTAT, ILO
Female employed population ⁶	4.9 *	2.0 *	≅ 0 2030	ILOSTAT, ILO
Male employed population ⁶	6.1 *	2.6 *	≅ 0 2030	ILOSTAT, ILO
target 1.2 By 2030, reduce at least by half the proportion of men, women and children of all ages living in poverty in all its dimensions according to national definitions				
1.2.1 Proportion of population living below the national poverty line ⁴	23.5 2015	10.1 2021	10.8 2030	Official Poverty Statistics, PSA
1.2.1.1 Proportion of population living below the national poverty line, by sex				
Female population	23.9 2015	18.4 2021	11.3 2030	Official Poverty Statistics among Basic Sectors, PSA
Male population ⁴	24.5 2015	18.5 2021	11.6 2030	Merged FIES-LFS, PSA
1.2.1.2 Proportion of population living below the national poverty line, by age group				
Children	33.5 2015	26.4 2021	15.7 2030	Official Poverty Statistics among Basic Sectors, PSA
Youth	20.5 2015	16.6 2021	9.7 2030	Official Poverty Statistics among Basic Sectors, PSA
Senior citizen	14.4 2015	10.3 2021	6.6 2030	Official Poverty Statistics among Basic Sectors, PSA

Page 1



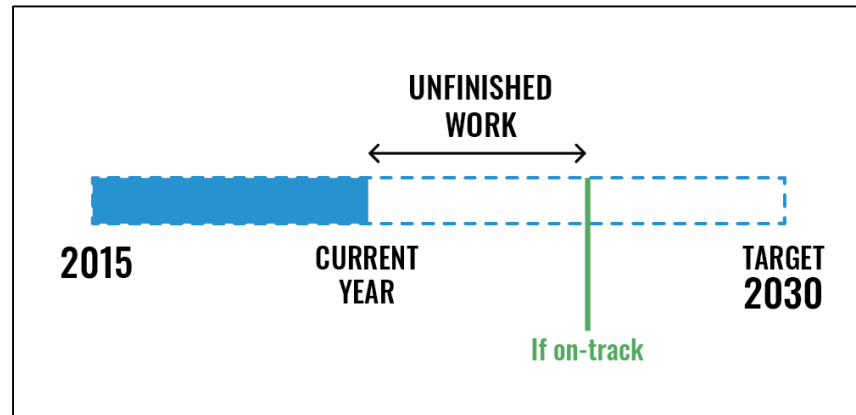
Measures for Tracking Progress

PSA Board Resolution No. 05 Series of 2020

ADOPTION OF THE UNESCAP SDG MEASURES AND THE TIME DISTANCE MEASURE IN TRACKING THE SDG PROGRESS

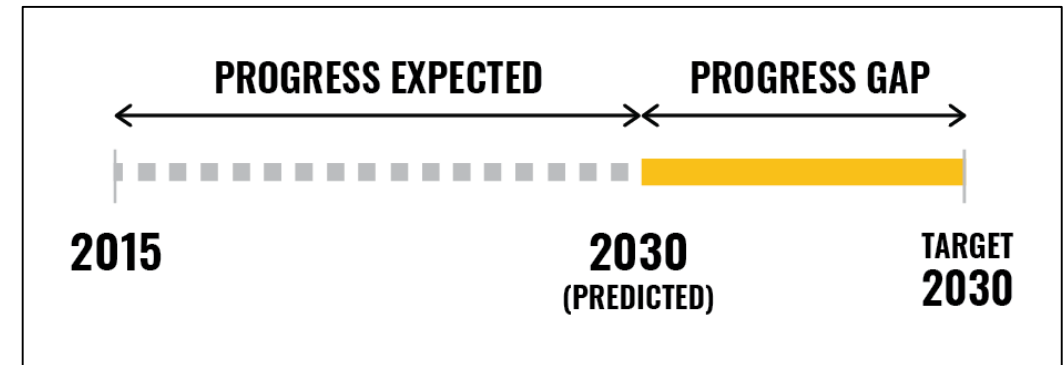
1 Current Status Index

How much progress has been made since 2015?



2 Anticipated Progress Index

How likely will the targets be achieved by 2030?



The 2030 numerical targets were determined by the Sub-Committee on SDGs of Development Budget Coordination Committee and its Technical Working Groups (i.e. Social, Economic, Environment, and Peace, Security and Governance)

Current Status Index: How much progress has been made since 2015?

(based on the updated 2030 numerical target and PSA data as of 06 September 2024)

Target 2030

2023

2015

If a bar reaches or crosses the 2023 line, it has made the expected progress to date.

Target 2030

2023

2015

If a bar shows progress but towards the opposite direction, it regresses.

If a bar shows advancement but misses the 2023 line, it has made progress but still short to achieve the expected progress.

Target 2030

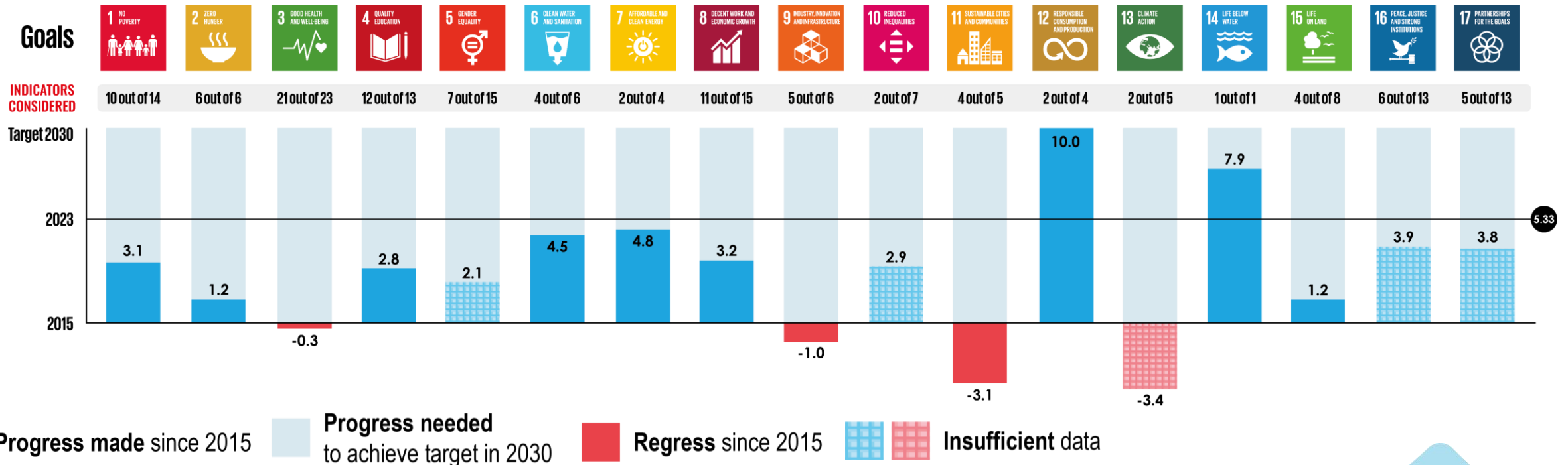
2023

2015

Current Status Index:

How much progress has been made since 2015?

(based on the updated 2030 numerical target and PSA data as of 06 September 2024)



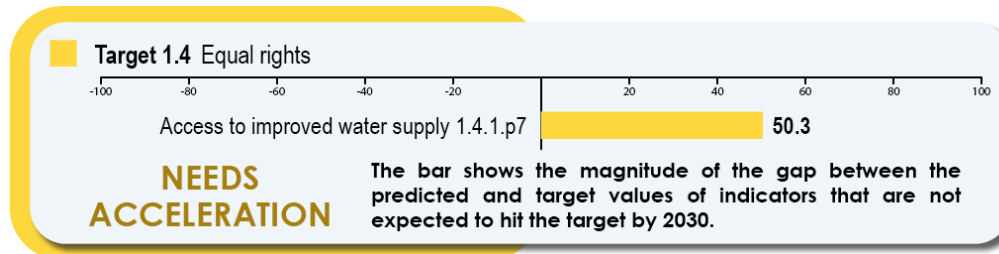
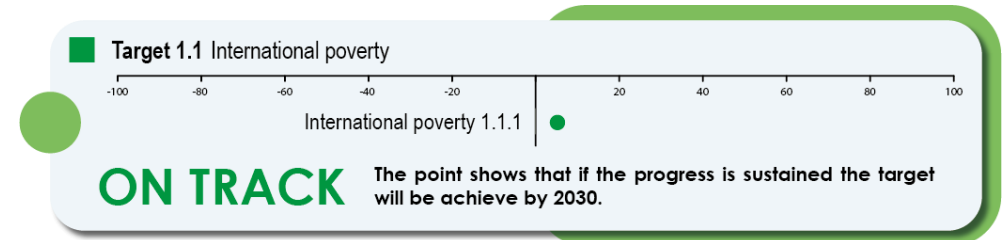
5.33

Data requirements: at least two (2) data points and 2030 numerical target



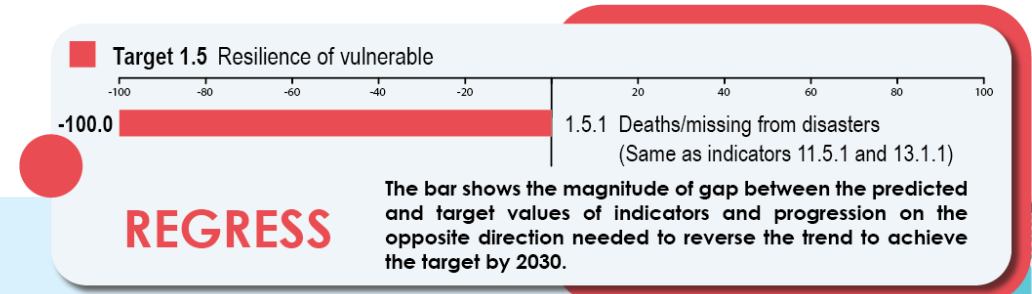
Anticipated Progress Index: How likely will the targets be achieved by 2030? (based on the updated 2030 numerical target and PSA data as of 06 September 2024)

$$0 \leq \text{Progress} \leq 100$$



$$10 < \text{Progress} \leq 100$$

$$-100 \leq \text{Progress} < 0$$



Anticipated Progress Index: How likely will the targets be achieved by 2030?

(based on the updated 2030 numerical target and PSA data as of 06 September 2024)



Aggregating to



28 Indicators
17 Targets



**Will meet the target with
current rate or minor effort**

43 Indicators
29 Targets



**Needs extra effort to
accelerate the current rate of
progress to achieve the target**

25 Indicators
17 Targets



**Regression or no progress
observed**

Data requirements: at least three (3) data points and 2030 numerical target



NO POVERTY

- **Target 1.1 Poverty living less than \$1.90**
 - 1.1.1 Incidence based on international poverty line
- **Target 1.2 People living in poverty in all its dimensions**
 - 1.2.1 Incidence based on national poverty line
- **Target 1.4 Equal rights**
 - 1.4.1 Access to basic services
 - 1.4.2.p1 Access to secure tenure
 - 1.4.s1 Maternal health care
 - 1.4.s2 Use any contraceptive method
 - 1.4.s3 Net enrolment rate
 - 1.4.s4 Own or owner-like possession of housing units
- **Target 1.5 Resilience of vulnerable**
 - 1.5.1 Deaths/missing/affected persons from disasters
 - 1.5.4 Local Disaster Risk Reduction Strategies

TARGETS		INDICATORS
2 (50.0%)	ON TRACK	2 (20.0%)
1 (25.0%)	NEEDS ACCELERATION	6 (60.0%)
1 (25.0%)	REGRESS	2 (20.0%)





ZERO HUNGER

- **Target 2.1 Food security**
 - 2.1.1.p1 Meeting 100% recommended energy intake
- **Target 2.2 Malnutrition**
 - 2.2.1 Stunting (under 5 years old)
 - 2.2.2 Malnutrition (under 5 years old)
 - 2.2.s1 Micronutrient deficiencies
 - 2.2.s2 Exclusive breastfed children

TARGETS		INDICATORS
0 (0.0%)	ON TRACK	1 (20.0%)
1 (50.0%)	NEEDS ACCELERATION	2 (40.0%)
1 (50.0%)	REGRESS	2 (40.0%)

3 GOOD HEALTH AND WELL-BEING

GOOD HEALTH AND WELL-BEING

Target 3.1 Reduction of maternal mortality ratio

- 3.1.2 Births attended by skilled health personnel
- 3.1.s1 Births delivered in a health facility

Target 3.2 Neonatal & child mortality

- 3.2.1 Under-five mortality
- 3.2.2 Neonatal mortality
- 3.2.s1 Infant mortality

Target 3.3 Communicable diseases

- 3.3.1.p1 New HIV infections
- 3.3.2 Tuberculosis incidence
- 3.3.3 Malaria incidence

Target 3.4 NCD and mental health

- 3.4.1 Non-communicable diseases

Target 3.5 Substance abuse

- 3.5.1.p1 Drug users completed treatment

Target 3.6 Road traffic accidents

- 3.6.1 Road traffic deaths

Target 3.7 Sexual & reproductive health

- 3.7.1 Family planning satisfied with modern methods
- 3.7.2 Adolescent birth rate (aged 15-19 years old)
- 3.7.s1 Contraceptive prevalence rate

Target 3.9 Health impact of pollution

- 3.9.3 Unintentional poisoning

Target 3.a Tobacco Control

- 3.a.1 Aged-standardized current tobacco use
- 3.a.s1 Current tobacco use

Target 3.b R&D of medicines

- 3.b.3.p1 Essential drugs in public health facilities

TARGETS INDICATORS

2 (20.0%) **ON TRACK** 3 (16.7%)

2 (20.0%) **NEEDS ACCELERATION** 7 (38.9%)

6 (60.0%) **REGRESS** 8 (44.4%)





QUALITY EDUCATION

- Target 4.1 Effective learning outcome**
 - 4.1.1 Proficiency level in reading and mathematics
 - 4.1.2 Completion rate
 - 4.1.s1 Cohort survival rate
- Target 4.2 Early childhood development**
 - 4.2.2 Organised learning before primary entry age
- Target 4.3 TVET & tertiary education**
 - 4.3.s3 Passing rate in licensure examination
 - 4.3.s4 TVET Certificate rate
- Target 4.4 Skills for employment**
 - 4.4.1.p1 Exposure to internet

- Target 4.5 Equal access to education**
 - 4.5.1 Inequality indices for education indicators
- Target 4.6 Adult literacy & numeracy**
 - 4.6.1.p1 Functional and basic literacy
- Target 4.a Education facilities**
 - 4.a.1.p1 Access of public schools facilities
- Target 4.c Qualified teachers**
 - 4.c.s1 Faculty qualification
 - 4.c.s2 TVET trainers trained

TARGETS INDICATORS

1 (12.5%)	ON TRACK	4 (33.3%)
6 (75.0%)	NEEDS ACCELERATION	5 (41.7%)
1 (12.5%)	REGRESS	3 (25.0%)



GENDER EQUALITY

- **Target 5.2 Violence against women & girls**
 - 5.2.1 Any violence experienced by women and girls
 - 5.2.s2 Reported abuse cases for women and children
- **Target 5.3 Early marriage**
 - 5.3.1 Women who are married or in union before age 15 and before age 18
- **Target 5.5 Women in leadership**
 - 5.5.1 Seats held by women in national parliaments and local governments
 - 5.5.2 Women in managerial positions

TARGETS ■ INDICATORS

1 (33.3%)	ON TRACK	1 (20.0%)
1 (33.3%)	NEEDS ACCELERATION	2 (40.0%)
1 (33.3%)	REGRESS	2 (40.0%)



CLEAN WATER AND SANITATION

- **Target 6.1 Safe drinking water**
 - 6.1.1.p1 Access to basic drinking water services
- **Target 6.2 Sanitation & hygiene**
 - 6.2.1.p1 Access to (a) basic sanitation services and (b) handwashing facility with soap and water
- **Target 6.3 Water quality**
 - 6.3.2.p1 Monitored bodies of water
- **Target 6.5 Water resources management**
 - 6.5.1.p1 Implementation of programs and projects in the Integrated River Basin Master Plans

TARGETS ■ INDICATORS

2 (50.0%)	ON TRACK	2 (50.0%)
2 (50.0%)	NEEDS ACCELERATION	2 (50.0%)
0 (0.0%)	REGRESS	0 (0.0%)



AFFORDABLE AND CLEAN ENERGY

- **Target 7.1 Access to energy services**
 - 7.1.1 Access to electricity
- **Target 7.3 Energy efficiency**
 - 7.3.1 Energy intensity

TARGETS ■ INDICATORS

1 (50.0%)	ON TRACK	1 (50.0%)
1 (50.0%)	NEEDS ACCELERATION	1 (50.0%)
0 (0.0%)	REGRESS	0 (0.0%)



8 DECENT WORK AND ECONOMIC GROWTH



DECENT WORK AND ECONOMIC GROWTH

Target 8.1 Per capita economic growth

- 8.1.1 Real GDP per capita growth

Target 8.5 Employment & decent work

- 8.5.2 Unemployment rate

Target 8.6 Youth not in education, employment or training

- 8.6.1 Youth not in education, employment or training

Target 8.7 Child & forced labour

- 8.7.1.p1 Children engaged in child labour

Target 8.8 Labour rights

- 8.8.1 Occupational injuries

8.9 Sustainable tourism

- 8.9.1.p1 Tourism gross value added to GDP and in growth rate

- 8.9.s1 Employed in tourism out of total employed

Target 8.10 Capacity of financial institutions

- 8.10.1 Commercial bank branches and automated teller machines

- 8.10.2 Adults (15 years and older) with bank account

- 8.10.s1 Financial access points with cash in/cash out services

- 8.10.s2 Cities and municipalities with bank branches and cash agents

TARGETS INDICATORS

1 (14.3%) **ON TRACK** 4 (36.4%)

5 (71.4%) **NEEDS ACCELERATION** 6 (54.5%)

1 (14.3%) **REGRESS** 1 (9.1%)



INDUSTRY, INNOVATION AND INFRASTRUCTURE

9.1 Infrastructure development

- 9.1.2 Passenger and freight volumes

9.2 Industrialization

- 9.2.1 Manufacturing value added per GDP or per capita
- 9.2.2 Manufacturing employment to total employment

Target 9.5 Research & technological capabilities

- 9.5.1 Research and development expenditure
- 9.5.2 Researchers (in full-time equivalent)

TARGETS INDICATORS

0 (0.0%)	ON TRACK	0 (0.0%)
2 (66.7%)	NEEDS ACCELERATION	3 (60.0%)
1 (33.3%)	REGRESS	2 (40.0%)



REDUCED INEQUALITIES

Target 10.2 Inclusion (social, economic and political)

- 10.2.1 Population living below 50 percent of median income

Target 10.5 Global financial markets

- 10.5.1 Financial Soundness Indicators

TARGETS INDICATORS

1 (50.0%)	ON TRACK	1 (50.0%)
0 (0.0%)	NEEDS ACCELERATION	0 (0.0%)
1 (50.0%)	REGRESS	1 (50.0%)



SUSTAINABLE CITIES AND COMMUNITIES

- **Target 11.5 Resilience to natural disasters**
 - 11.5.1 Deaths/missing/affected persons from disasters
- **Target 11.6 Air quality & waste management**
 - 11.6.2.p1 Ambient air quality
- **Target 11.b Disaster risk management**
 - 11.b.2 Local Disaster Risk Reduction Strategies

TARGETS ■ ● INDICATORS

0 (0.0%)	ON TRACK	0 (0.0%)
1 (33.3%)	NEEDS ACCELERATION	1 (33.3%)
2 (66.7%)	REGRESS	2 (66.7%)



RESPONSIBLE CONSUMPTION AND PRODUCTION

- **Target 12.4 Managing chemicals & wastes**
 - 12.4.2.p1 Industrial hazardous waste generated/treated
- **Target 12.b Monitor sustainable tourism**
 - 12.b.1 Implementation of standard accounting tools to monitor the economic and environmental aspects

TARGETS ■ ● INDICATORS

2 (100.0%)	ON TRACK	2 (100.0%)
0 (0.0%)	NEEDS ACCELERATION	0 (0.0%)
0 (0.0%)	REGRESS	0 (0.0%)



13 CLIMATE ACTION



CLIMATE ACTION

Target 13.1 Resilience & adaptive capacity

- 13.1.1 Deaths/missing/affected persons from disasters
- 13.1.3 Local Disaster Risk Reduction Strategies

TARGETS



INDICATORS

0 (0.0%)	ON TRACK	0 (0.0%)
0 (0.0%)	NEEDS ACCELERATION	1 (50.0%)
1 (100.0%)	REGRESS	1 (50.0%)

14 LIFE BELOW WATER



LIFE BELOW WATER

Target 14.5 Conservation of coastal areas

- 14.5.1.p1 Marine protected areas

TARGETS



INDICATORS

1 (100.0%)	ON TRACK	1 (100.0%)
0 (0.0%)	NEEDS ACCELERATION	0 (0.0%)
0 (0.0%)	REGRESS	0 (0.0%)

15 LIFE ON LAND



LIFE ON LAND

Target 15.1 Terrestrial & inland freshwater

- 15.1.1 Forest land
- 15.1.2.p1 Important sites for terrestrial and freshwater biodiversity

Target 15.5 Loss of biodiversity

- 15.5.1 Red list index

TARGETS



INDICATORS

1 (50.0%)	ON TRACK	2 (66.7%)
1 (50.0%)	NEEDS ACCELERATION	1 (33.3%)
0 (0.0%)	REGRESS	0 (0.0%)



16 PEACE, JUSTICE AND STRONG INSTITUTIONS



PEACE, JUSTICE AND STRONG INSTITUTIONS

Target 16.1 Reduction violence

- 16.1.1 Intentional homicides
- 16.1.4.p1 Families that feel safe walking alone around the area they live at night
- 16.1.s1 Index crime rate

Target 16.5 Corruption and bribery

- 16.5.1.p1 Bribe to government official

Target 16.7 Inclusive decision-making

- 16.7.1.p1 National and local positions compared to national distributions

Target 16.9 Legal identity

- 16.9.1 Children registered with a civil authority

TARGETS INDICATORS

1 (25.0%)	ON TRACK	3 (50.0%)
2 (50.0%)	NEEDS ACCELERATION	2 (33.3%)
1 (25.0%)	REGRESS	1 (16.7%)



17 PARTNERSHIPS
FOR THE GOALS



PARTNERSHIPS FOR THE GOALS

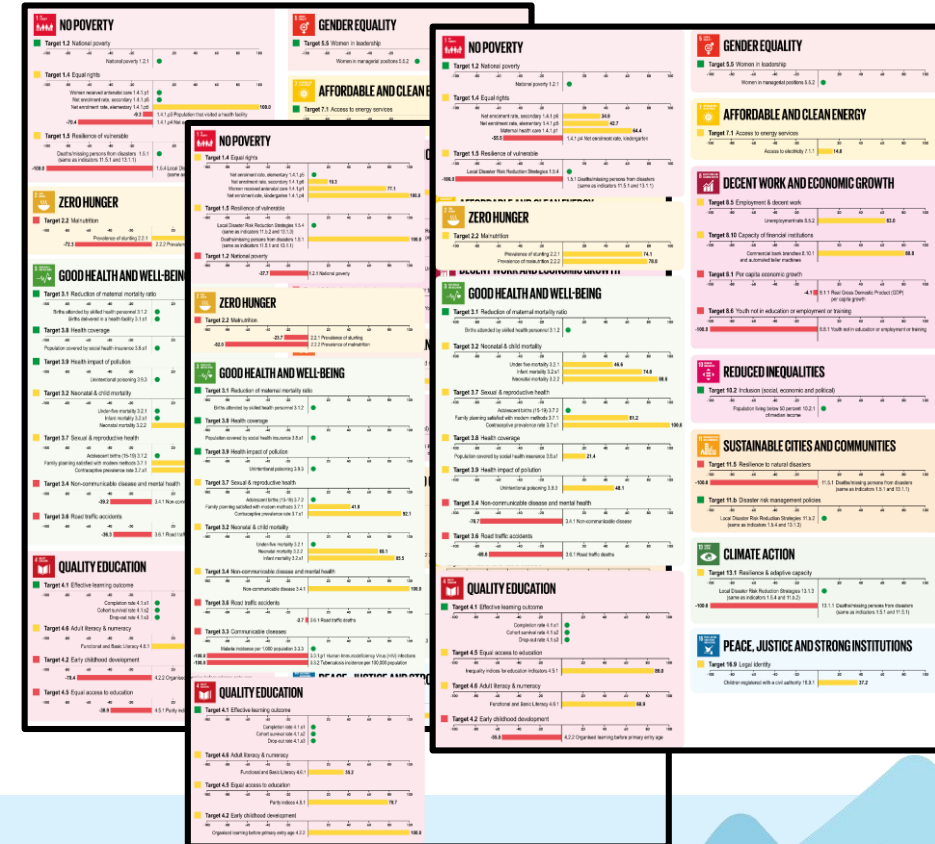
- **Target 17.1 Tax & other revenue**
 - 17.1.1 Government revenue (budgetary central government)
- **Target 17.6 International cooperation**
 - 17.6.1 Fixed Internet broadband subscription
- **Target 17.8 Technological capacity-building**
 - 17.8.1.p1 Exposure to internet
- **Target 17.13 Global macroeconomic dashboard**
 - 17.13.1 Macroeconomic dashboard
- **Target 17.19 Statistical capacity**
 - 17.19.s1 Birth and death registration rate

TARGETS		INDICATORS
1 (20.0%)	ON TRACK	1 (20.0%)
4 (80.0%)	NEEDS ACCELERATION	4 (80.0%)
0 (0.0%)	REGRESS	0 (0.0%)

Generation of Regional Pace of Progress

NATIONAL SDG TRACKER

Indicator	Target	# of Indicators
TARGET 1.1 International poverty	T1.1 International poverty	1
1.1.1 International poverty MODIFIED	T1.2 National poverty	2
Population living in poverty at less than \$1.90 a day at 2011 PPP MODIFIED TOTAL	T1.3 Social protection	1
TARGET 1.2 National poverty	T1.4 Access to basic services	2
1.2.1 National poverty MODIFIED	T1.5 Resilience to disasters	4
1.2.2 Poverty according to national dimensions UNDEVELOPED	T1.A Resources for poverty programs	2
TARGET 1.3 Social protection	T1.B Poverty eradication policies	1
TARGET 1.4 Access to basic services		
TARGET 1.5 Resilience to disasters		
TARGET 1.A Resources for poverty programs		



SDG Indicator for Local Monitoring



Expansion of the monitoring at lower geographic level (City/Municipal Level), potentially-sourced from the 2024 Community-Based Monitoring System (CBMS) - 28 indicators



Launch and Orientation on the SDG Data Platform

16 September 2024

Objectives:

1. Officially launch the SDG Data Platform;
2. Orient data source agencies on how to use the digital platform;
3. Train the designated SDG technical focal persons on how to update and submit data; and
4. Facilitate common appreciation of standards and guidelines, including accountabilities to ensure well-functioning SDG Data Platform.



Next Steps

Publish the Updated SDG Watch, SDG Database, and SDG Pace of Progress

Republic of the Philippines
Philippine Statistics Authority

2021

**SDG
WATCH**
PHILIPPINES

Based on submissions as of 26 March 2021

Goals/Targets/Indicators

Baseline

Latest

Target ⁴⁾

Data Source Agency

Data

Year

Data

Year

Data

Year

GOAL 1. ERADICATE EXTREME POVERTY AND HUNGER

target 1.1 By 2030, eradicate extreme poverty for all people everywhere, currently measured as people living on less than \$1.25 a day

1.1.1

Proportion of population below the international poverty line of US\$1.90 per day (2015 PPP), by sex, age, employment status and geographical location (urban/rural) ¹⁾

Proportion of employed population aged 15 years old and over living below the international poverty line of US\$1.90 per day ¹⁾

Female employed population

Male employed population

Proportion of employed population aged 15 to 24 years old living below the international poverty line of US\$1.90 per day ¹⁾

Female employed population

Male employed population

Proportion of employed population aged 25 years old and over living below the international poverty line of US\$1.90 per day ¹⁾

Female employed population

Male employed population

target 1.2 By 2030, reduce at least by half the proportion of men, women and children

1.2.1

Proportion of population living below the national poverty line, by sex and age ²⁾

1.2.1.1

Proportion of population living below the national poverty line, by sex

Female population

Male population ³⁾

1.2.1.1.1

Proportion of population living below the national poverty line, by age group ³⁾

Children

Youth

Senior citizen

1.2.1.1.2

Proportion of population living below the national poverty line, by employment status ⁴⁾

Employed population

Unemployed population


1.2.1.1.3

Proportion of population living below the national poverty line, by geographical location ⁵⁾

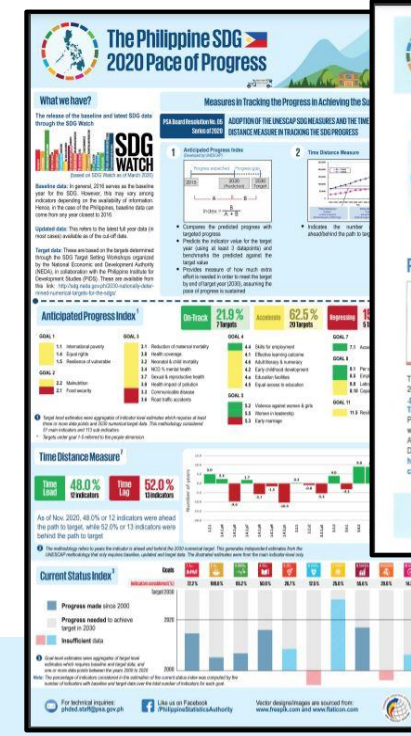
Population residing in urban areas

Population residing in rural areas

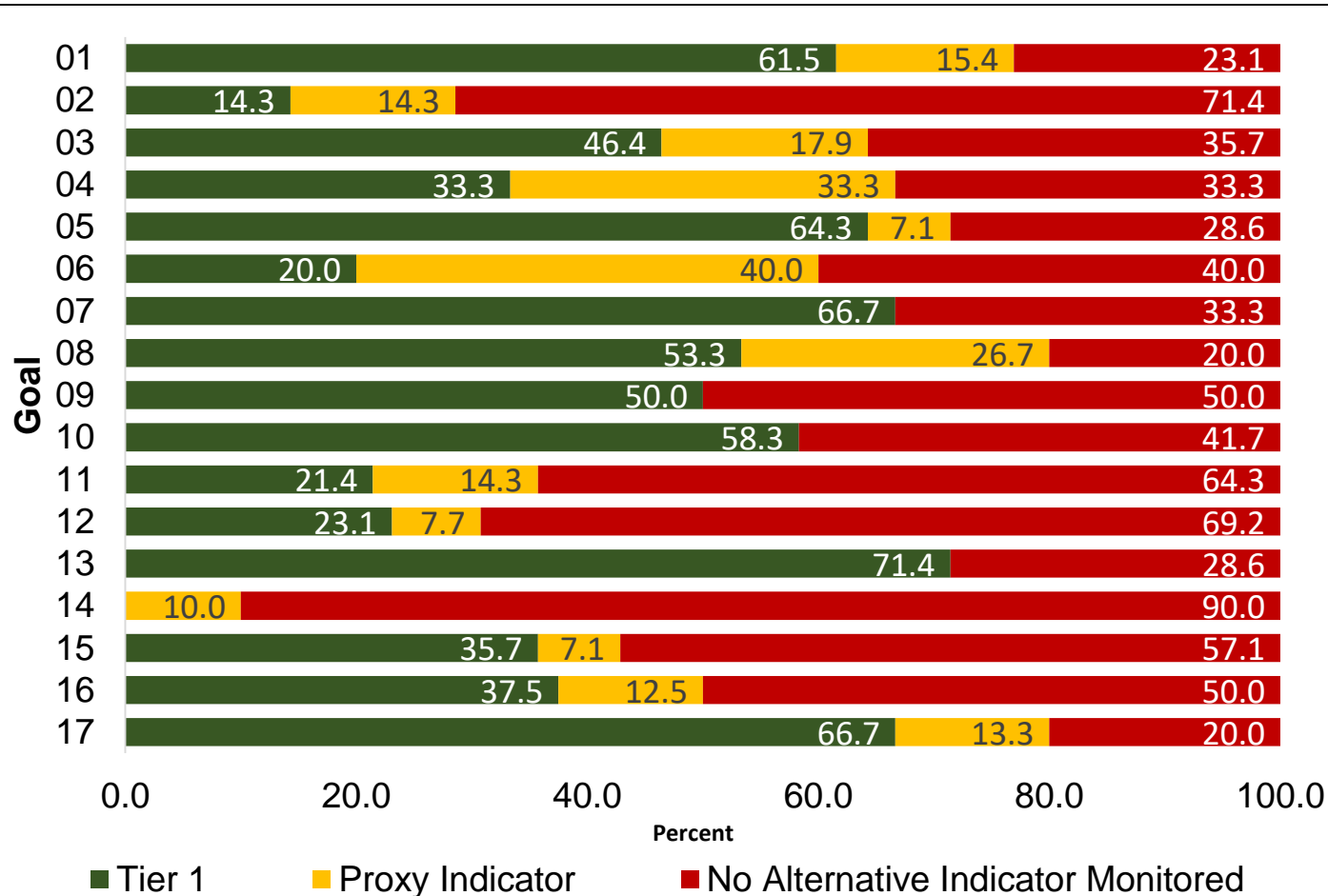
SDG



SDG DATABASE
Philippine Indicators



Next Steps



Philippine Statistical Development Program 2023-2029

Explore possibility of addressing data gaps in the SDG indicators through programs/activities in the PSDP 2023-2029 in collaboration with the research of the PSRTI.



Maraming Salamat Po! Thank You!

PSA-SDG Webpage: psa.gov.ph/sdg
PSA SDG Email: sdg@psa.gov.ph

